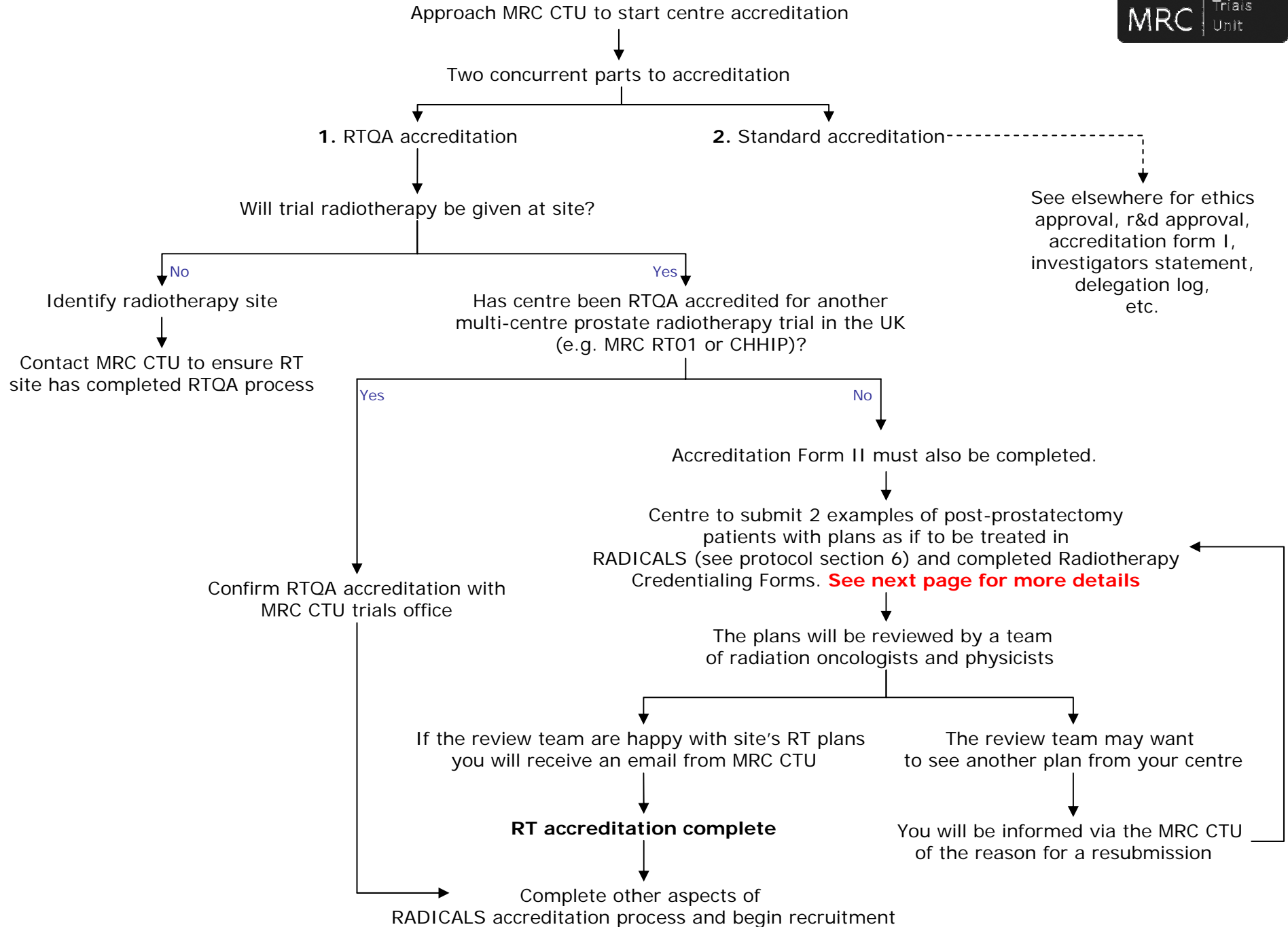


Instructions for centres - Accreditation & RTQA Process



Instructions for centres - Accreditation & RTQA Process

Centres must submit 2 anonymous examples of post-prostatectomy patients with plans as if to be treated in RADICALS (see protocol section 6) and completed Radiotherapy Credentialling Forms.

The plans should be either:

- existing plans for patients who have already been treated to the protocol specifications or
- new plans for patients suitable for RADICALS who were previously treated to a different specification

We ask for centres to send 3 printed copies for review, to consist of:

- All CT slices from 1 slice superior to 1 slice inferior of the PTV (or at least images every 5mm). Also sagittal and coronal reconstructions through the isocentre.
- Include CTV, PTV and normal tissue contours on each image (Note: please provide contour outlines rather than solid colourwash to enable review of outlines against CT data)
- Include appropriate isodose contours on at least the 3 planes through the isocentre (50%, 70%, 90%, 95%, 100%, 105%)
- DVH graph for PTV and normal tissues